

Etabloc 065-050-250 GG

ETB 065-050-250-GGSBV11 WSEBI4AHB

Operating point 1

Dimensioning operating point

Operating conditions (purchaser requirements)

Fluid	Water
Fluid variant	Clean water
Specified fluid temperature	20 °C
Density Fluid handled	998 kg/m ³
Kinematic viscosity Fluid handled	1 mm ² /s

Vapour pressure determined	0.02337 bar.a
Minimum inlet pressure required	-0.3 bar.r
Specified ambient temperature	20 °C
Installation altitude above sea level	1,000 m

Operating conditions (performance)

Flow rate	20.11 m ³ /h
Minimum permissible flow rate	5.088 m ³ /h
Maximum permissible flow rate	21.24 m ³ /h
Pump set	
Head	15.24 m
Shut-off head	16.69 m
Efficiency Pump	56.64 %
NPSH required	0.75 m

Maximum power input at duty point	1.47 kW
Maximum power input / curve	2.008 kW
Pump speed	1,446 1/min
Discharge pressure-max.	1.634 bar.r

Design data pump

Scope of supply Pump supplied by KSB	Bare-shaft pump
Pump standard	EN 733
Shaft axis position	Horizontal
Pump design	Close-coupled
Pump system design	Single-pump system
Pump direction of rotation, viewed from casing side	Counterclockwise
Hydraulic impeller diameter	216 mm
Impeller type	Radial, closed, multi-channel
Free passage	10 mm
Support foot	Yes

Mains frequency	50 Hz
Minimum efficiency index MEI	0.6
Minimum permissible fluid temperature	0 °C
Maximum permissible fluid temperature	60 °C
Quantity Stages, single-entry	1
Casing wear ring design suction-side	Flat
Casing wear ring design discharge-side	Flat
Installation chamber Casing cover	Conical (A-type cover)
Bearing bracket size / shaft unit	25
Pump directive	CE

Etabloc 065-050-250 GG

ETB 065-050-250-GGSBV11 WSEBI4AHB

Nozzle connections pump

Nominal diameter Suction nozzle	DN 65	Nominal diameter Discharge nozzle	DN 50
Nominal pressure Suction nozzle	PN 16	Nominal pressure Discharge nozzle	PN 16
Suction nozzle position	Axial	Discharge nozzle position	0 deg
Suction nozzle design acc.to	EN1092-2	Discharge nozzle design acc.to	EN1092-2
Suction flange bolt hole pattern as per standard	EN1092-2	Discharge flange bolt hole pattern as per standard	EN1092-2
Flange facing type Inlet	Raised face (B,RF)		
Flange facing type Outlet	Raised face (B,RF)		

Auxiliary connections pump

6B Fluid Drain	G 1/4 Drilled and plugged	1M Pressure gauge Discharge nozzle	Without Without
6D Fluid Filling and venting	G 1/4 Drilled and plugged	1M Pressure gauge Suction nozzle	Without Without
5B Venting and drain	G 1/4 Drilled and plugged		

Shaft sealing

Shaft seal type	Single mechanical seal; seal chamber can be vented (A-type casing cover) - AV	Shaft seal code	Code 11
		Shaft seal manufacturer inboard	KSB's choice
Operating mode of mechanical seal (function)	API plan 03	Mechanical seal type inboard	KSB's choice
Determined pressure Seal chamber	-0.2 bar.r	Material Shaft seal inboard	BQEGG DW001

Etabloc 065-050-250 GG

ETB 065-050-250-GGSBV11 WSEBI4AHB

Materials

Material Volute casing (102)	EN-GJL-250/A48 CL 35B	Material Bolts/Screws Volute casing (902.01)	8.8
Material Casing cover (161)	EN-GJL-250/A48 CL 35B	Material Nut Impeller fastening (920.95)	(ST)
Material Shaft	C45+N		
Material Impeller (230)	EN-GJL-250/A48 CL 35B		
Material Casing wear ring suction-side (502.01)	JL/LAMELLAR GRAPHITE CAST IRON		
Material Casing wear ring discharge-side (502.02)	JL/LAMELLAR GRAPHITE CAST IRON		
Material Shaft protecting sleeve (523)	(CRNIMO ST INT)		
Material Static seal Discharge cover	DPAF DW001		
Material Drive lantern	EN-GJL-250/A48 CL 35B		

Driver

Electric motor	No	Rated speed Motor	1,445 1/min
Drive concept	Electric actuator	Number of motor poles	4
Drive standard, mechanical	IEC	Rated power Motor	1.5 kW
Drive standard electric	IEC		
Motor construction type	IM V1 (IM3011) IEC 60034-7		
Motor size	90L		
Enclosure Unit	Without		

Coating

Aggregate

Surface preparation	Free from dirt, grease, rust
Properties Primer coat	Hydro dip primer, water-dilutable
Thickness Primer coat	60 µm
Properties Top coat	Acrylate dispersion water-thinned
Thickness Top coat	40 µm
Colour Top coat	RAL5002 Ultramarine Blue

Etabloc 065-050-250 GG

ETB 065-050-250-GGSBV11 WSEBI4AHB

Energy cost and Environmental Impact

Result

Estimated Product Carbon Footprint (cradle-to-gate) (CO₂eq) 174 kg

*

This PCF indication is based on the product mass assuming the typical shares of materials in use. The conversion rate between product mass and CO₂ emissions is based on several life cycle assessments acc. to ISO14040 / 14044 of sample products of the same type series. Objective and scope of these LCAs was defined as being limited to the manufacturing phase (cradle-to-gate). With regard to inputs, all materials, energy and auxiliary materials were accounted for, and with regard to outputs, emissions, scrap and waste were accounted for. The impact of outbound logistics is not covered. The assessments' input variables cover at least 95 % of the total product mass. The analysis focuses exclusively on the Global Warming Potential (EF3.0 Climate Change – total).

Packaging

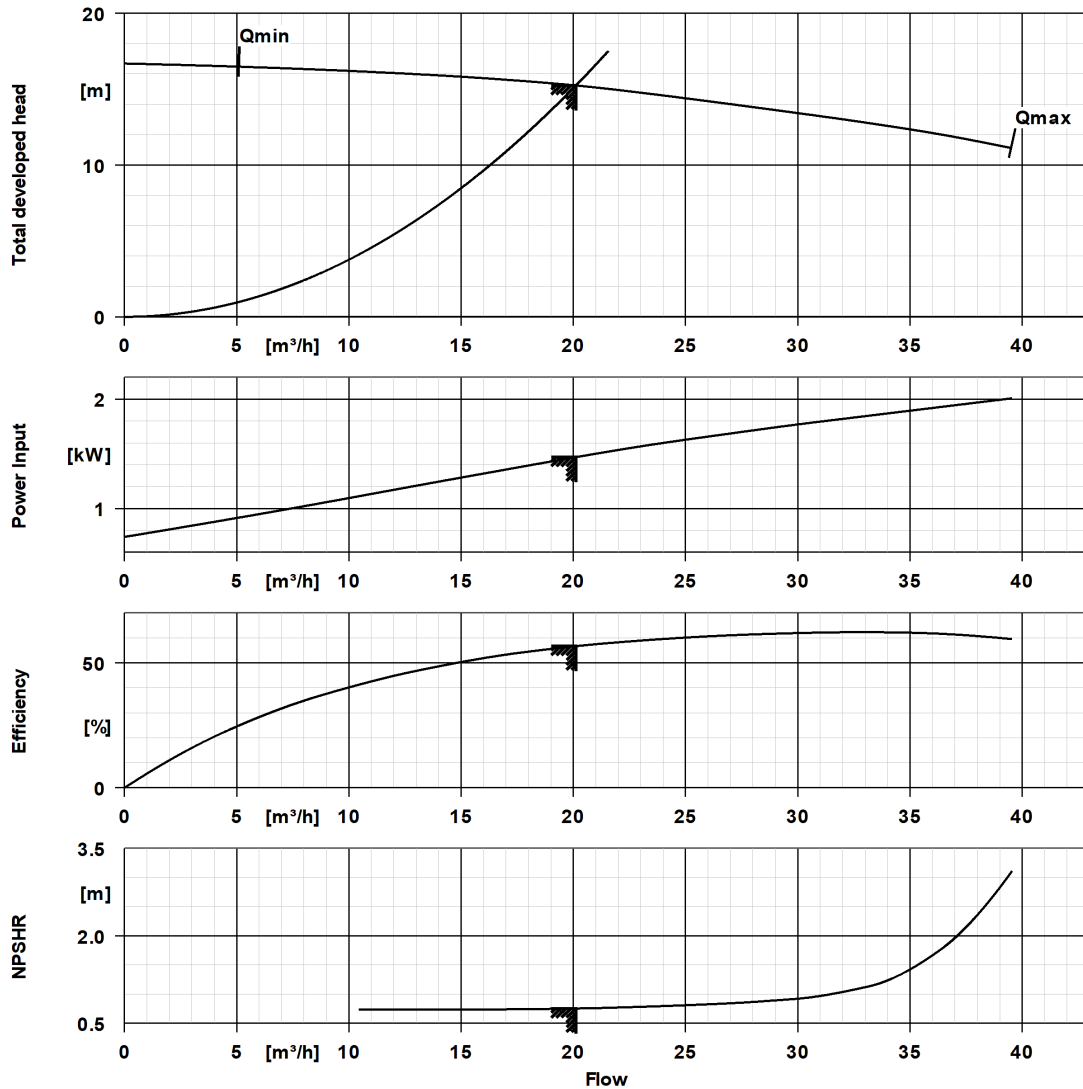
Suitable for transport	Truck transport
Suitable for storage	Indoor storage
Packaging category	KSB's choice (A0)

Performance Curve (Pump)



Etabloc 065-050-250 GG

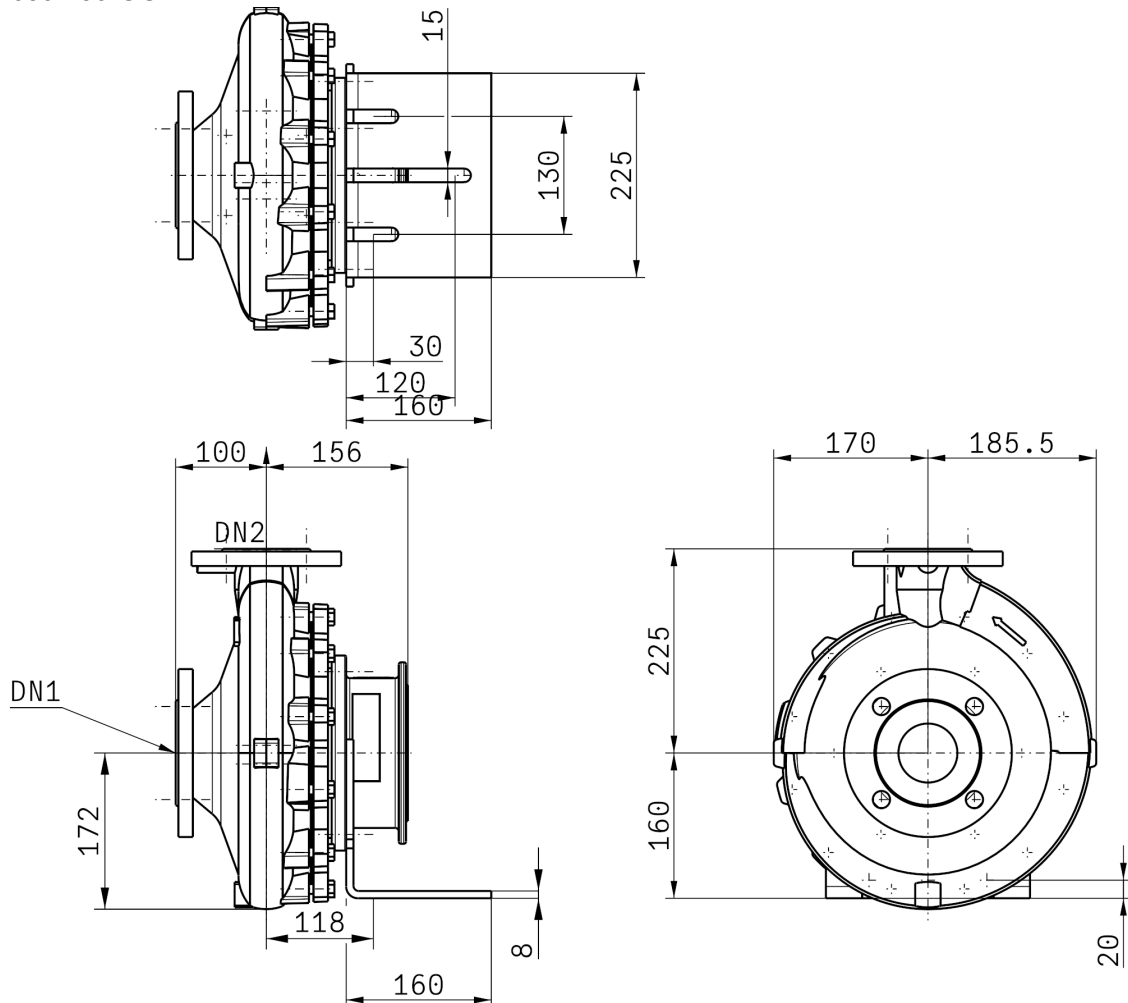
ETB 065-050-250-GGSBV11 WSEBI4AHB



Curve Data

Pump speed	1,446 1/min	Efficiency Pump	56.6 %
Density Fluid handled	998 kg/m³	Minimum efficiency index MEI	0.6
Kinematic viscosity Fluid handled	1 mm²/s	Maximum power input at duty point	1.47 kW
Flow rate	20.1 m³/h	NPSH required	0.75 m
Head	15.2 m	Hydraulic impeller diameter	216 mm
		Hydraulic calculation according to standard/ class	EN ISO 9906 Class 3B

Etabloc 065-050-250 GG
ETB 065-050-250-GGSBV11 WSEBI4AHB



Drawing is not to scale.

Dimensions are given in mm

Motor

Electric motor	No
Rated power Motor	1.5 kW
Rated speed Motor	1,445 1/min

Connections

Nominal diameter Suction nozzle	DN 65
Suction flange bolt hole pattern as per standard	EN1092-2
Nominal diameter Discharge nozzle	DN 50
Discharge flange bolt hole pattern as per standard	EN1092-2
Nominal pressure Suction nozzle	PN 16
Nominal pressure Discharge nozzle	PN 16

Net weight

Total weight Pump	45.78 kg
Total weight Pump set	45.78 kg

Etabloc 065-050-250 GG

ETB 065-050-250-GGSBV11 WSEBI4AHB

Connect pipelines stress-free

Dimensional tolerances for shaft axis height: DIN 747

Dimensions without tolerances, middle tolerances to: ISO 2768-m

Connection dimensions for pumps: EN735

Dimensions without tolerances - welded parts: ISO 13920-B

Dimensions without tolerances - gray cast iron parts: ISO 8062-CT9

Plan for additional connections see extra drawing